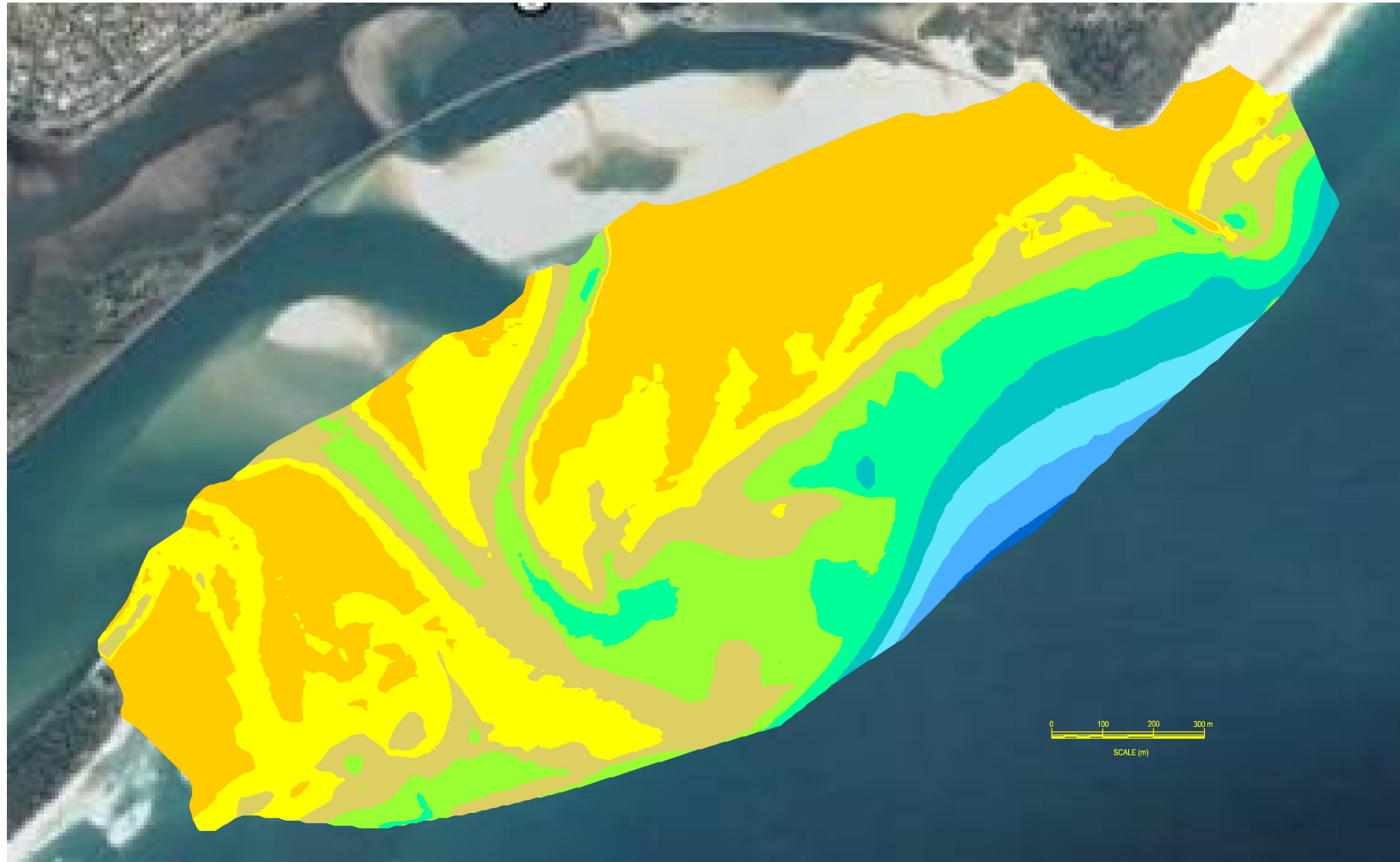


Manning River Entrance Survey as at December 2015



WARNING: *Changes in bed and channel contours could occur rapidly due to waves and currents. Extreme caution should be used when navigating this entrance.*

Seabed contours show average depths in metres below Lowest Astronomical Tide Datum (LAT) not clearance depths.

This survey is not to be used for navigational purposes.

