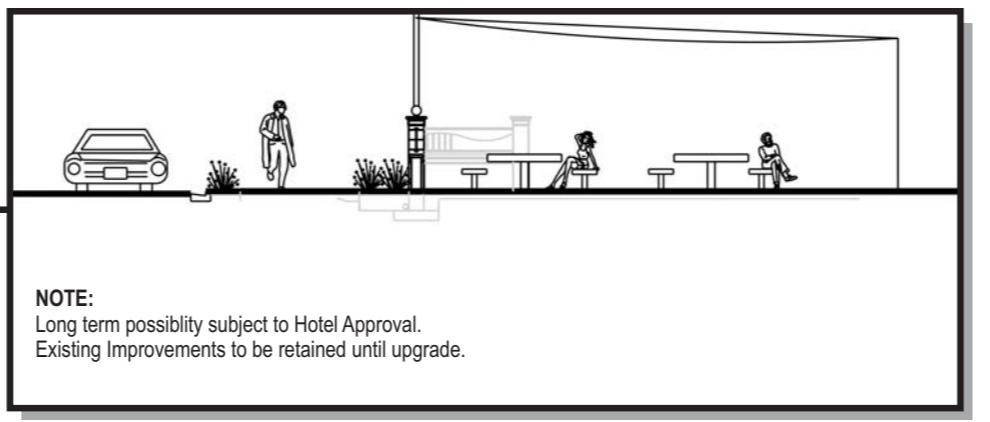
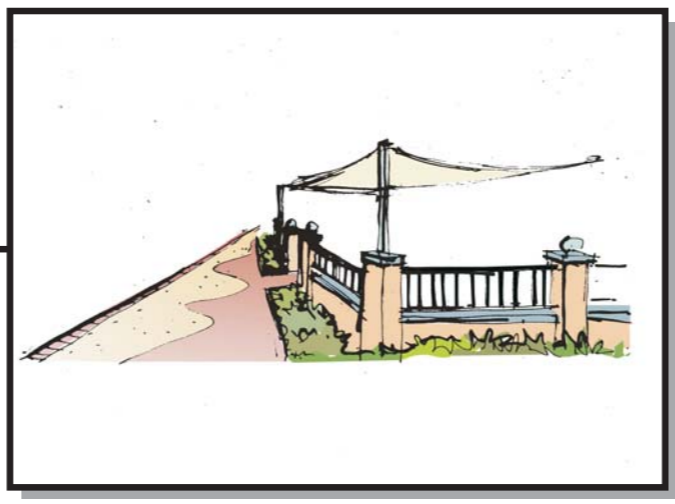


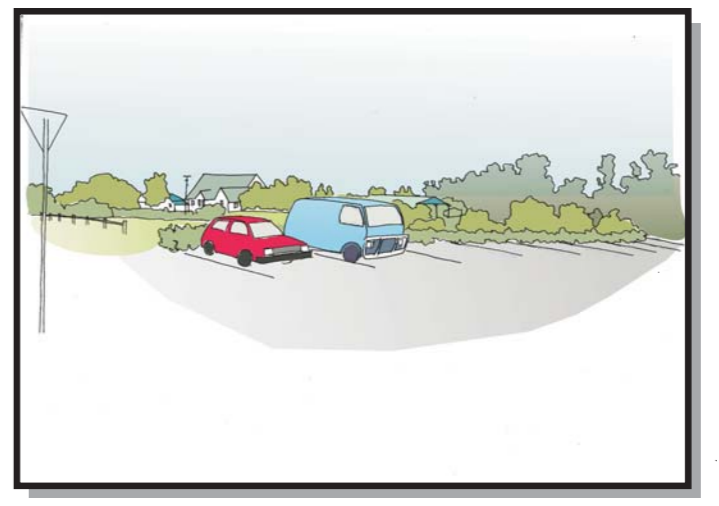
- 1 EXISTING CENOTAPH
- 2 MEMORIAL PARK
- 3 FISHING PLATFORMS (with fishing tables)
- 4 JETTY
- 5 PLAQUES (Relocate existing plaques)
- 6 7m x 7m GAZEBO & ELECTRIC BBQ
- 7 PICNIC TABLE & ELECTRIC BBQ
- 8 BUS SHELTER
- 9 PROMENADE- 2m Wide (Coloured Concrete to match shopfront footpath with Stencilled Patterns of River Animals and Plants)
- 10 FORMALISED CARPARKING (Left in and left out only (Subject to RTA Approval))
- 11 FORMALISED TRUCK STOP (Subject to RTA Approval)
- 12 RIVER BANK WEED CONTROL
- 13 RIVERBANK IMPROVEMENTS
- 14 MAIN BEACH (Terraced seating to view water sports and river fireworks)
- 15 OBSERVATION TOWER
- 16 EXISTING CHILDREN'S PLAY AREA (provide soffal and shade shelter)
- 17 TIMBER BOARDWALK (Low deck with kick rails)
- 18 WETLAND AREA (undertake weed control)
- 19 PEDESTRIAN ACCESS (stamp to match colour and pattern of shopfront footpath)
- 20 LANDSCAPED MEDIAN (low groundcovers)
- 21 PASSIVE OPEN SPACE AREA
- 22 EXISTING TERRACED SEATING (500mm wide concrete strip and turf seating to view water sports and fireworks)
- 23 NOT USED
- 24 POTENTIAL OUTDOOR DINING AREA (Coloured Concrete Pavement, Shade structure, and rendered block work walls with custom designed panels) Colour: Abilox Reverblend Beige Dose Rate: 4.15% in Grey
- 25 TIMBER FOOTBRIDGE (crossing swale) To be carried out with No.39
- 26 CANOE LAUNCH/REST AREA (small beach area and carparking)
- 27 ENTRY SIGN (Subject to RTA Approval)
- 28 EXISTING RAMP (to be upgraded for use as SES access, earthworks required)
- 29 UPGRADE SHOPFRONT FOOTPATH (Coloured concrete pavement with stamped animal and plant features. 2-TONED COLOURED CONCRETE Colour: Abilox Terracotta Oxide Dose Rate: 4.15% in off-white cement and Abilox Creamstone Oxide with Dose Rate: 8.3% in off-white cement)
- 30 EXISTING CONCRETE FOOTPATH (to be upgraded with stamped concrete)
- 31 POLE LIGHTING (to promenade)
- 32 FEATURE LANDSCAPING (enhance existing landscaping)
- 33 FORMALISED CARPARKING AND TRAILER PARKING (Subject to RTA approval)
- 34 RELOCATED BUS STOP
- 35 POTENTIAL WATER SKI REST AREA (small beach area)
- 36 FEATURE STAMPED COLOURED CONCRETE TO INTERSECTIONS Colour: Abilox Terracotta Oxide Dose Rate: 4.15% in off-white cement
- 37 COLOURED CONCRETE FOOTPATH WITH STAMPED HEADER (river nautical patterns stamped into concrete) Colour: Abilox Cinnamon Buff Dose Rate: 8.3% in off-white COLOURED CONCRETE PATH Colour: Abilox Riverblend Beige Dose Rate: 4.15% in grey cement 1.5m wide



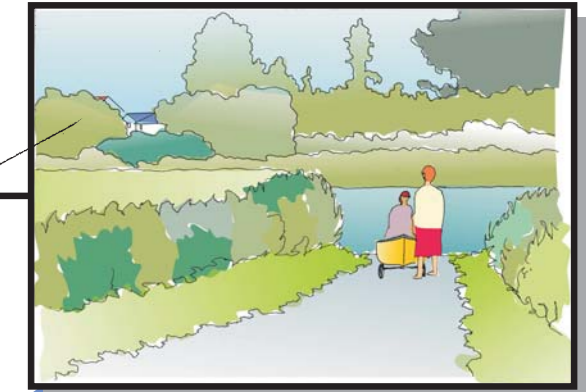
Typical Section through Outdoor Dining Area



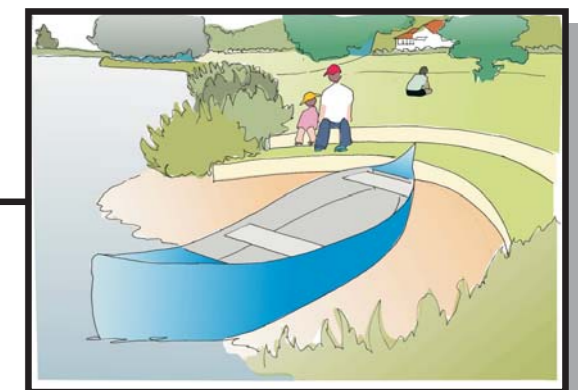
Outdoor Dining Area



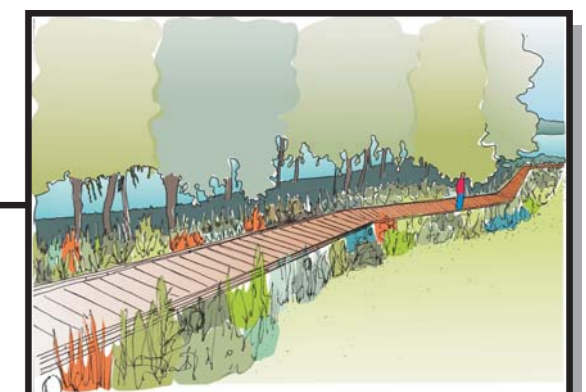
Carpark



Canoe Ramp



Canoe Rest / Launch Area



Timber Boardwalk



Prepared For:
Richmond Valley Council
 Prepared By:
GeoLINK