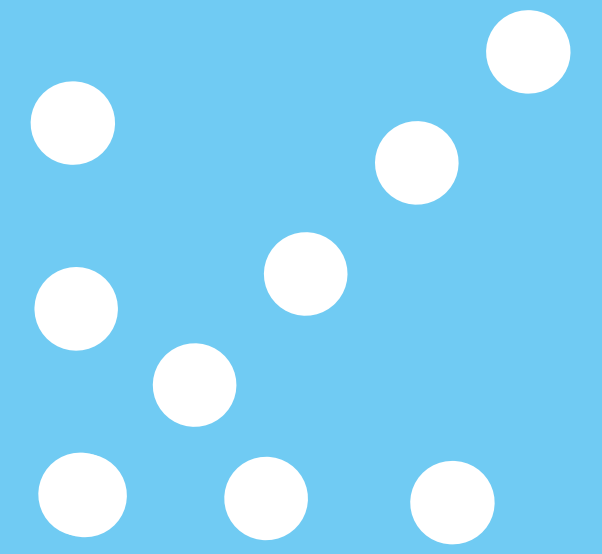


BATEMANS BAY

WORKING WITH COMMUNITY AND INDUSTRY TO PROVIDE KEY BOATING INFRASTRUCTURE



- Batemans Bay Marina is a rare marina opportunity on the south coast of NSW.
- The 12.3ha Crown land site provides the opportunity to design, construct and operate a marina and associated tourist facility under a long-term lease with all land remaining in public ownership.
- Since 1982, the marina has had a maximum capacity of 126 berths.

- The marina structure is also nearing the end of its useful life and needs upgrading to current standards.
- The project will generate job opportunities, economic growth and a greater variety of services, not only for Batemans Bay, but the entire south coast of NSW.
- Ariadne Australia Ltd has been announced as the successful proponent for the redevelopment. Ariadne has been chosen on its

- ability to meet the challenge of redeveloping the marina into a world-class facility.
- The proposal, developed in consultation with industry and the community, includes a 240 wet berth marina, a 250 vessel drystack facility and a commercial precinct that will provide services such as a chandlery, cafes, and tourism-related businesses.

Achieving balanced economic, social and environmental outcomes